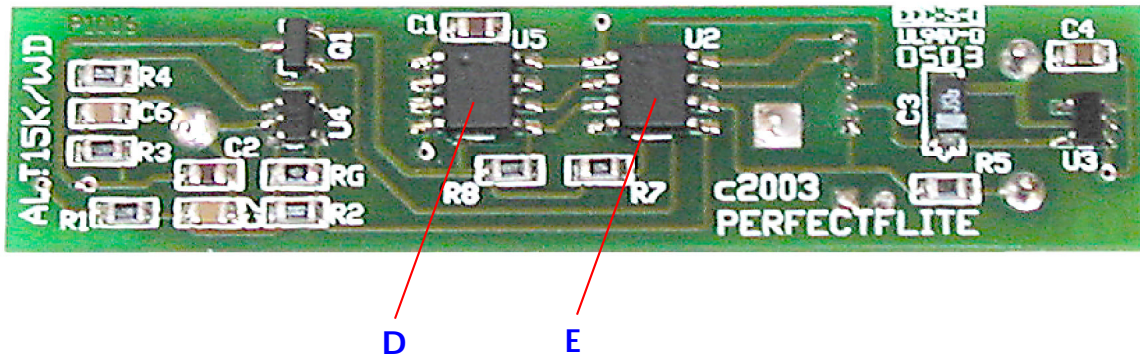
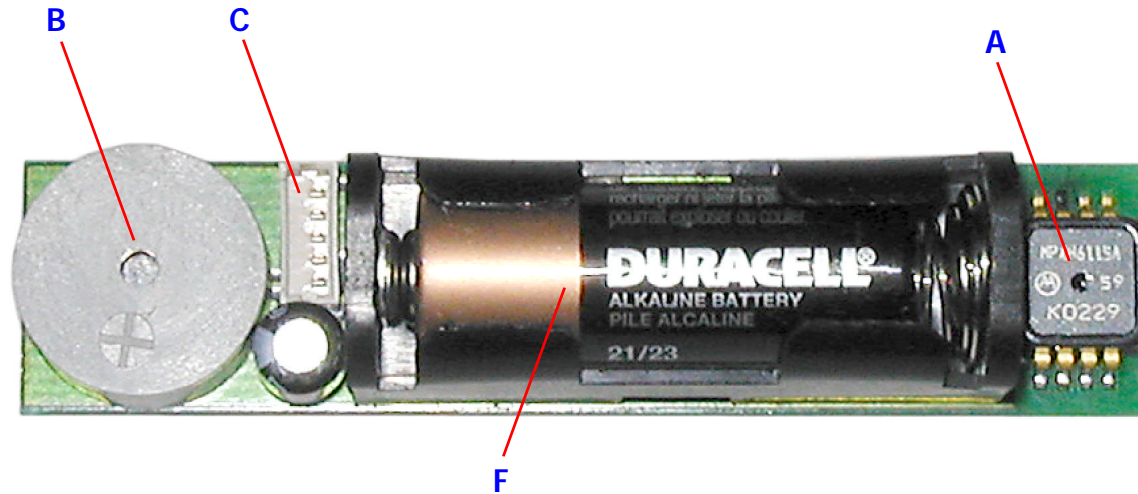
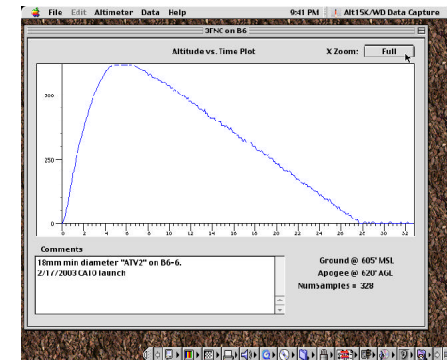


Alt15K/WD (with data) Altimeter



Key Features

- A) Precision sensor works to 15,000 feet MSL
 - B) Audibly reports peak altitude after flight
 - C) Stores over 5 minutes of flight data at 10 samples per second for later download to PC or Mac
 - D) All data is stored in nonvolatile memory and is preserved even if power is lost
 - E) High accuracy A/D and precise factory calibration yields +/- (0.3% reading + 4') accuracy
 - F) Miniature A23 type 12V battery provides up to 25 hours of continuous operation
- Advanced firmware algorithms detect apogee properly even during Mach speed flights
 - FLASH program memory for future firmware updates (free of charge to original purchaser)
 - Rugged SMD construction, stringent QC testing, and internal self-diagnostics assure reliability
 - Measures just 2.45" L * 0.55" W * 0.55" H, fits in 18mm BT20, weighs 0.5 oz with battery
 - Backed by a full three year warranty



Shown above at actual size

PerfectFlite

15 Pray Street
(413) 549-3444

Amherst, MA 01002
www.perfectflite.com

A15K Altimeter \$69.95

DT2P PC Connect \$14.95

DT2M Mac Connect \$14.95